

# THE LIBRARY RE-IMAGINED

FINAL PRESENTATION JURY

THE MISSION:

DESIGN A LIBRARY FOR THE DIGITAL AGE

LINDA S KRUK

CORE COURSE

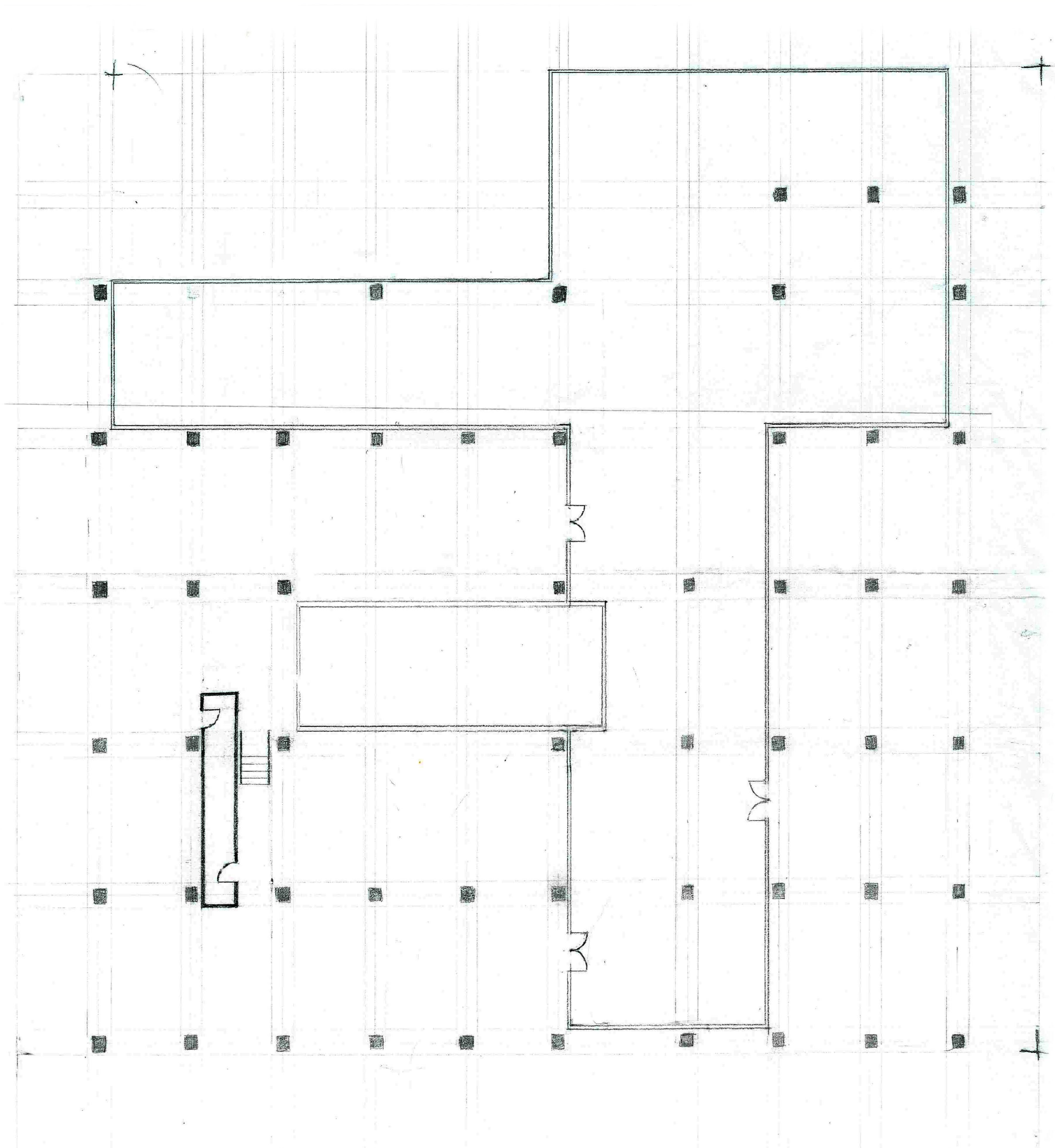
PARSONS SCHOOL

# ELEVATING READING TO NEW LEVELS

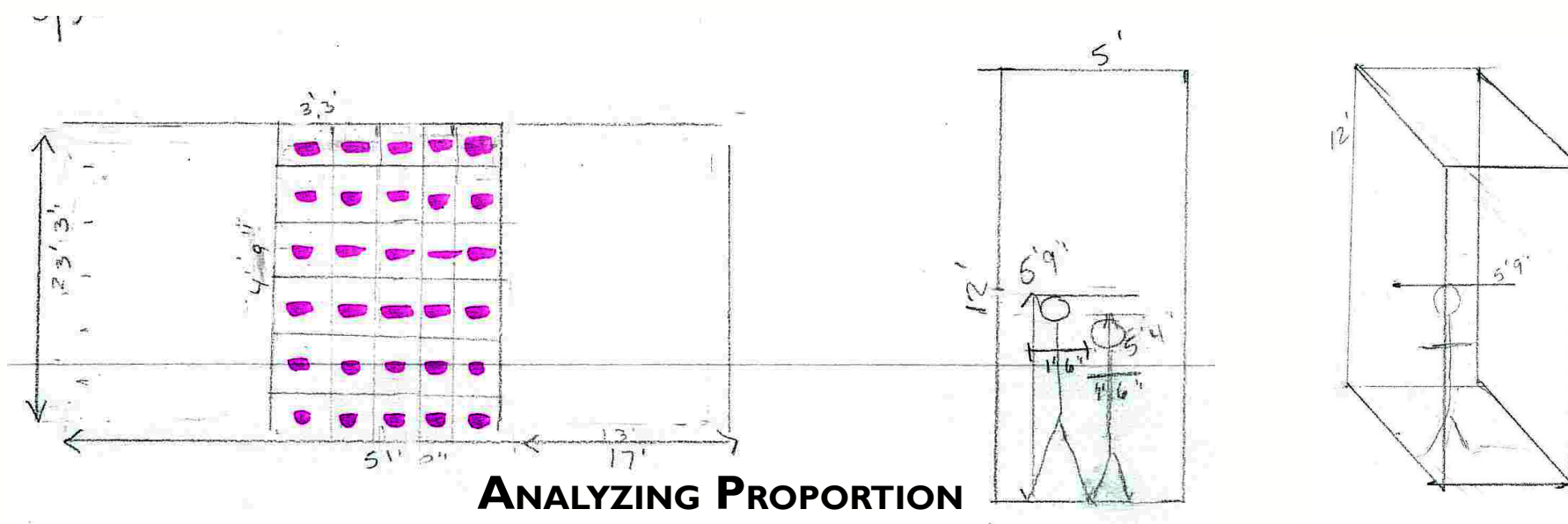


READING IS A PERSONAL PURSUIT. THE LEVER HOUSE IS A VERY IMPERSONAL AND VAST SPACE. NOT A PLACE GIVEN TO OFFERING A QUIET, INTIMATE, RESTFUL ATMOSPHERE USUALLY ASSOCIATED WITH READING. UNTIL NOW... THIS PROJECT PROVIDES SPACE THAT BRINGS THE HEIGHT OF THE LEVER HOUSE'S LOFTY CEILING TO HUMAN SCALE, WARMTH AND AMPLE LIGHT FROM THE SUN, QUIET TO CONCENTRATE, NESTLED AMIDST CALMING FOLIAGE, AND THE CLOUDS TO WATCH WHILE DEEP IN THOUGHT. A SPACE THAT ELEVATES READING TO A NEW LEVEL OF ENJOYMENT. THE LIBRARY HAS COME OF AGE. BRING A BOOK, BORROW A BOOK, OR USE ELECTRONIC DEVICES TO DISPLAY READING MATERIAL AND INTERNET CONTENT - ON THE WALL. ALL THIS AS THE NEW AGE LIBRARY PAYS HOMAGE TO THE BUILDING THAT SURROUNDS IT - ADDING A NEW AMBIENCE TO SUCH STORIED ARCHITECTURE.

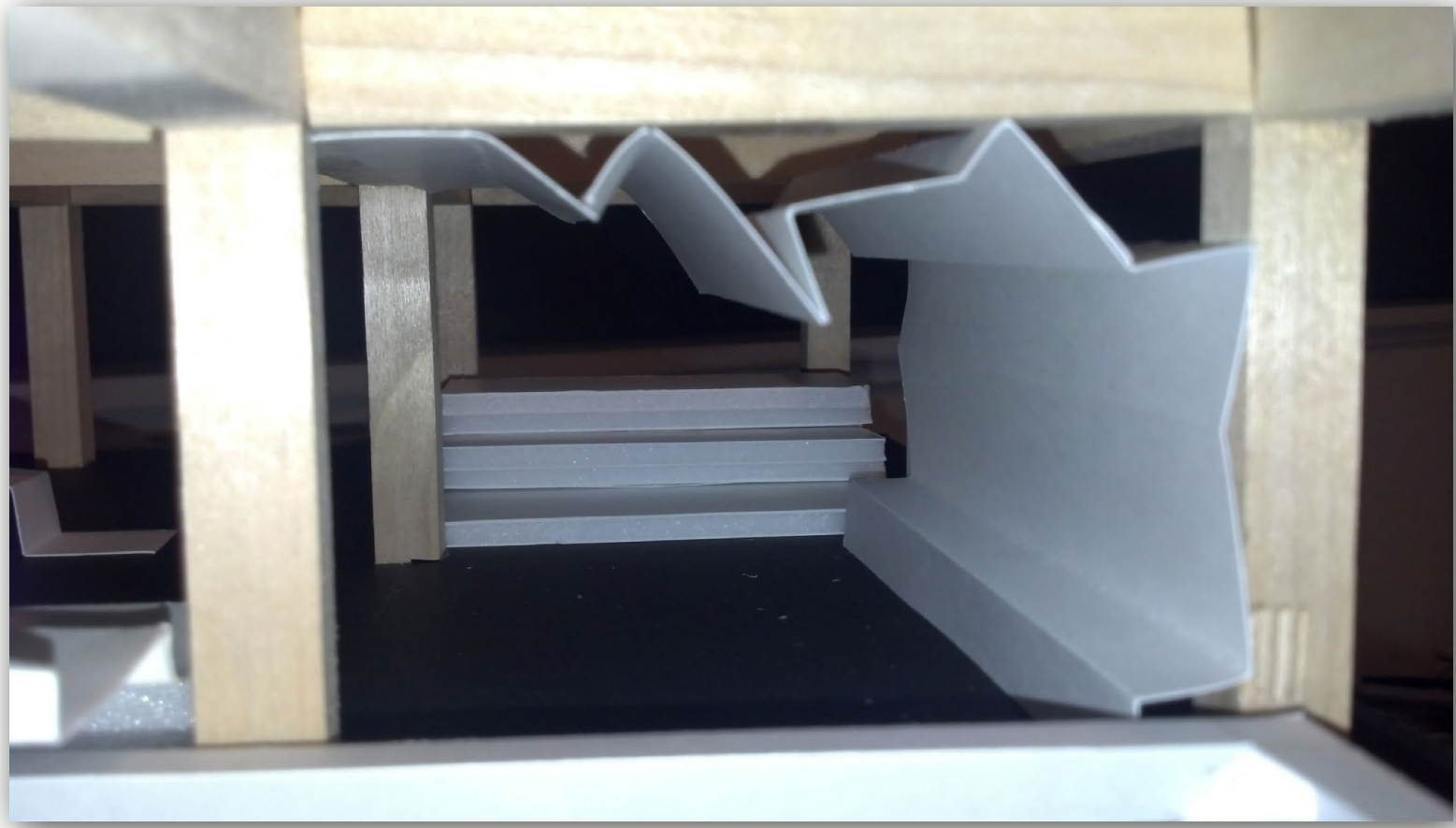




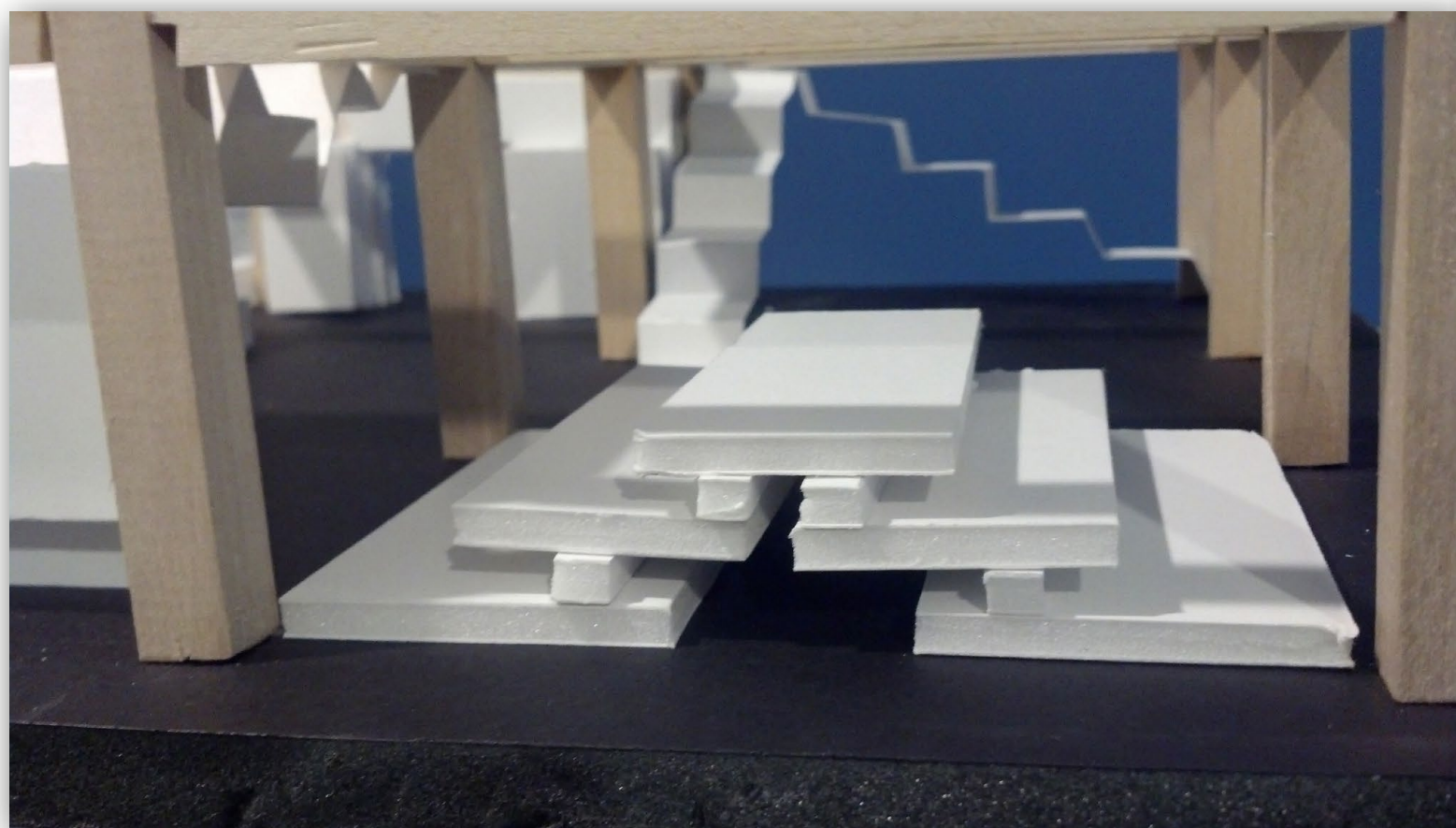
**LEVER HOUSE - STREET LEVEL FLOOR PLAN**



**FOLDING**



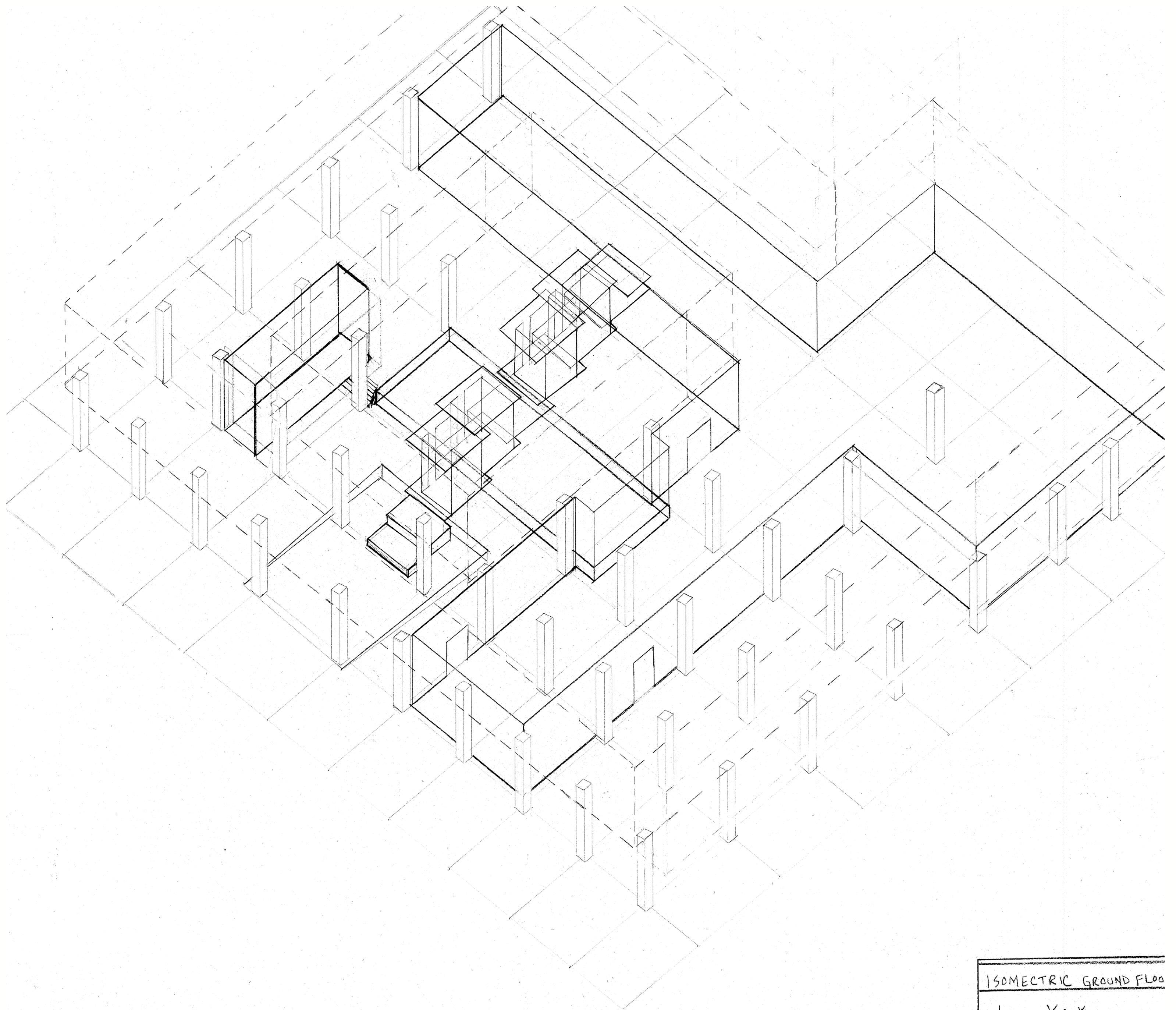
**CARVING**



**STACKING**

**FOLDING**



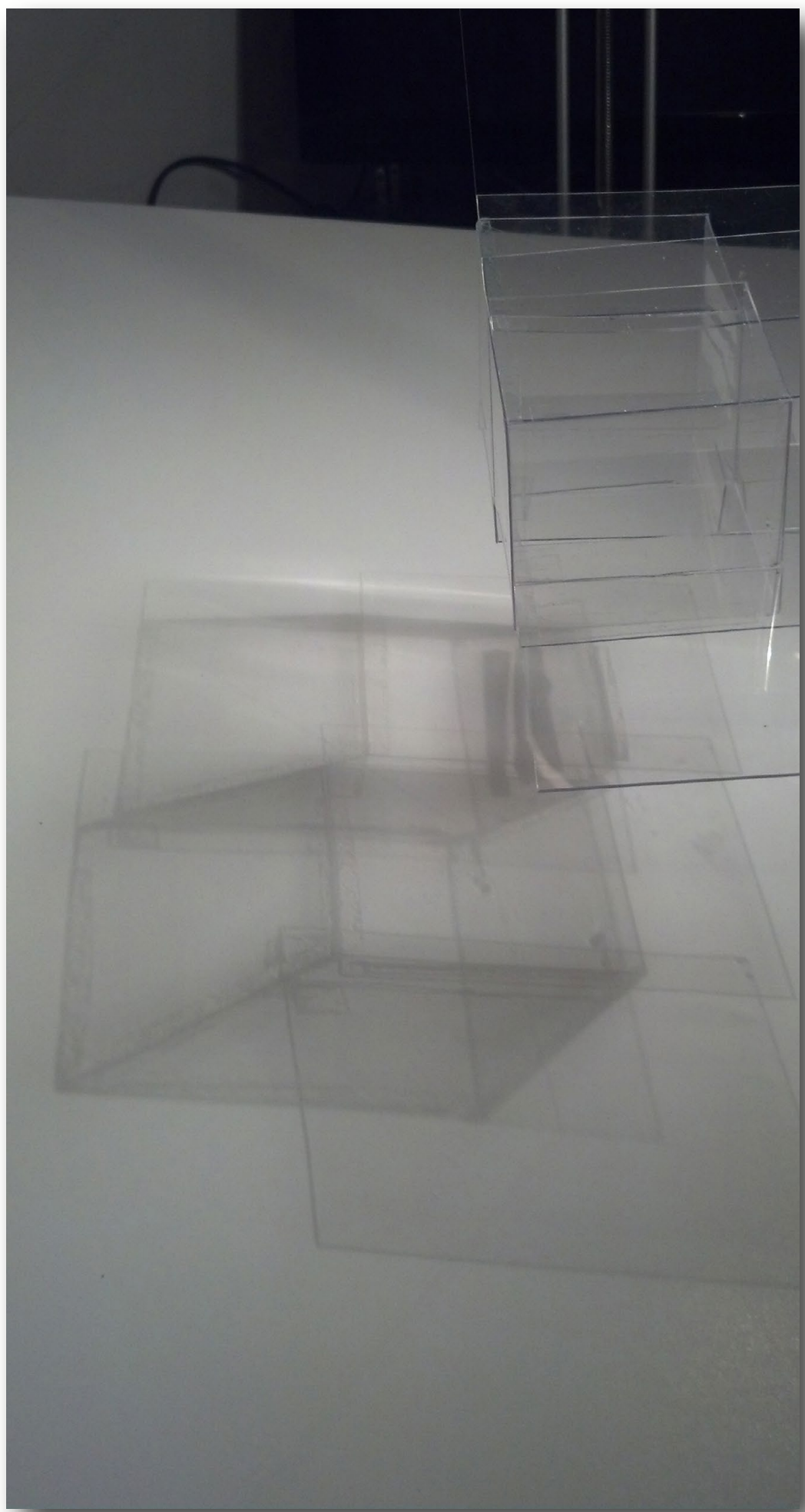
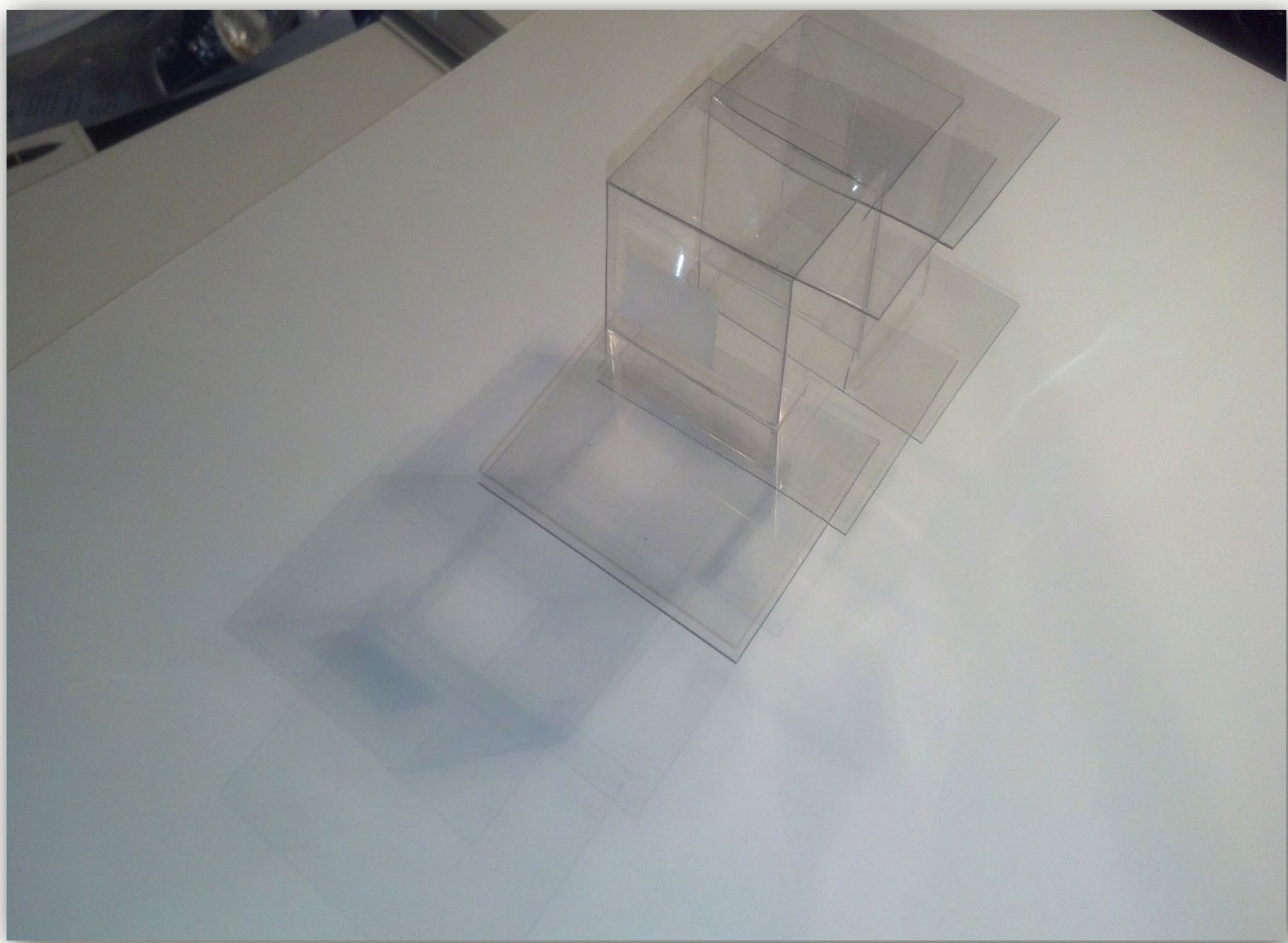


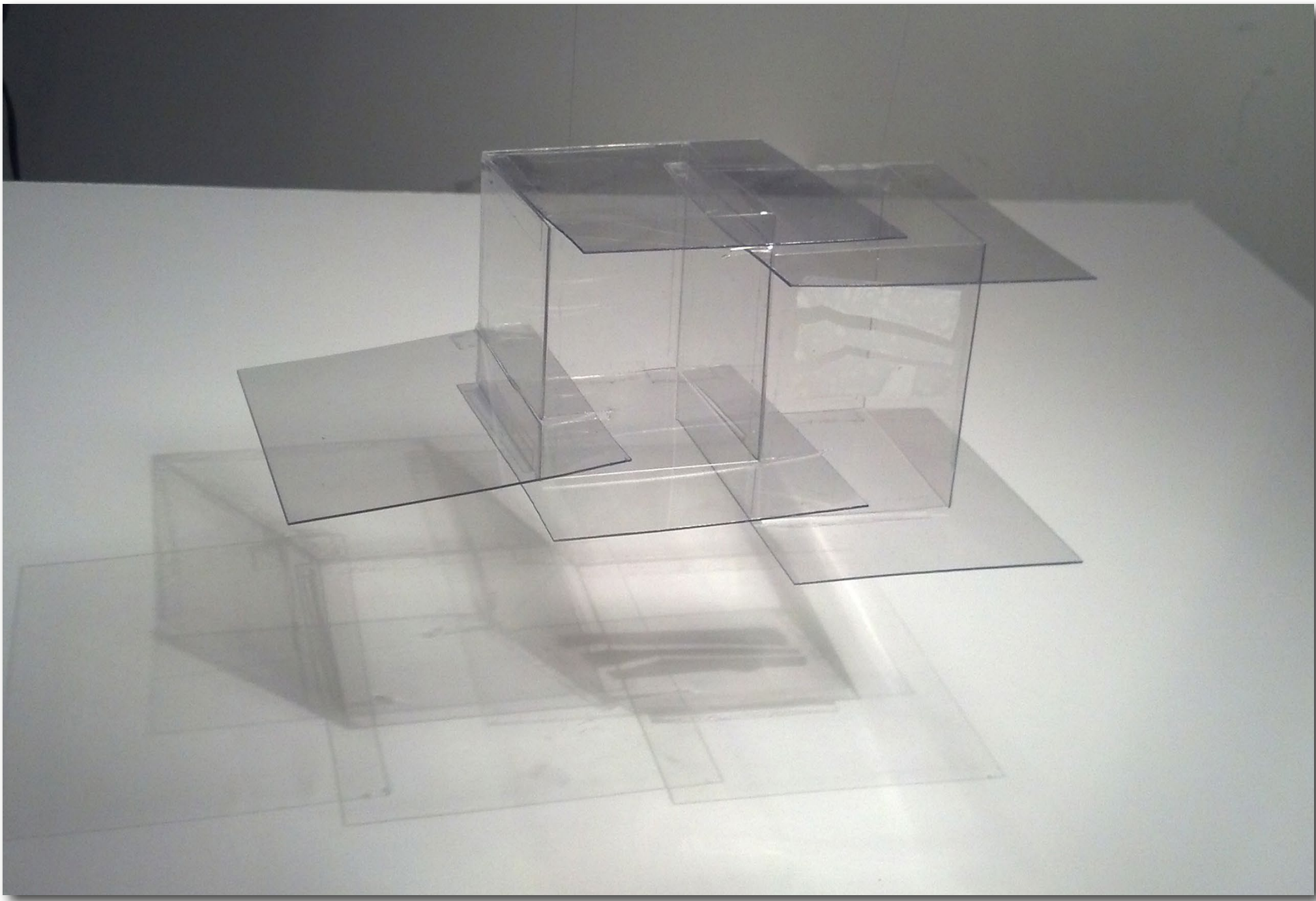
ISOMETRIC GROUND FLOOR

LINDA KRUK  
ID CORE COURSE

**PROJECT AREA AXO WITH CONCEPT MODEL INSERTED**

# LIGHT STUDIES

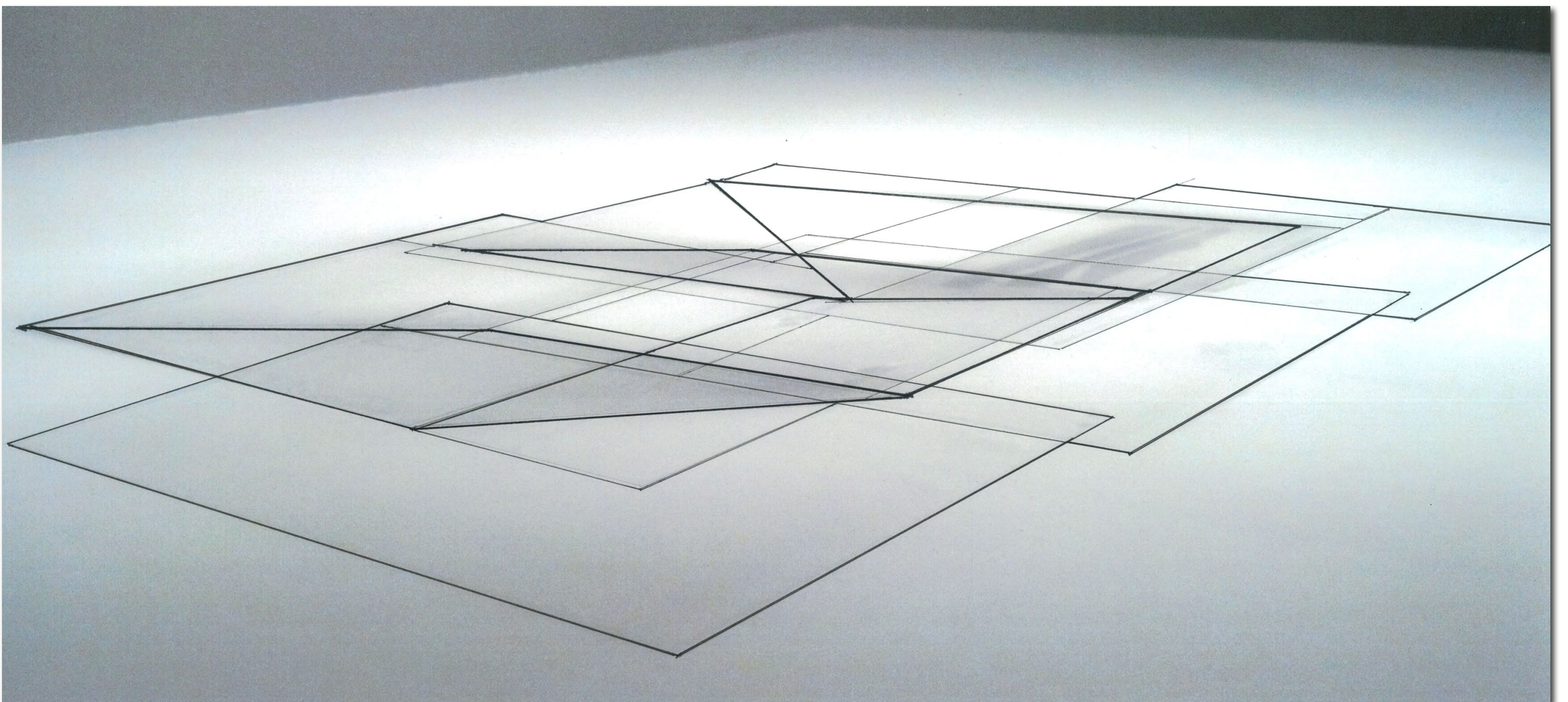


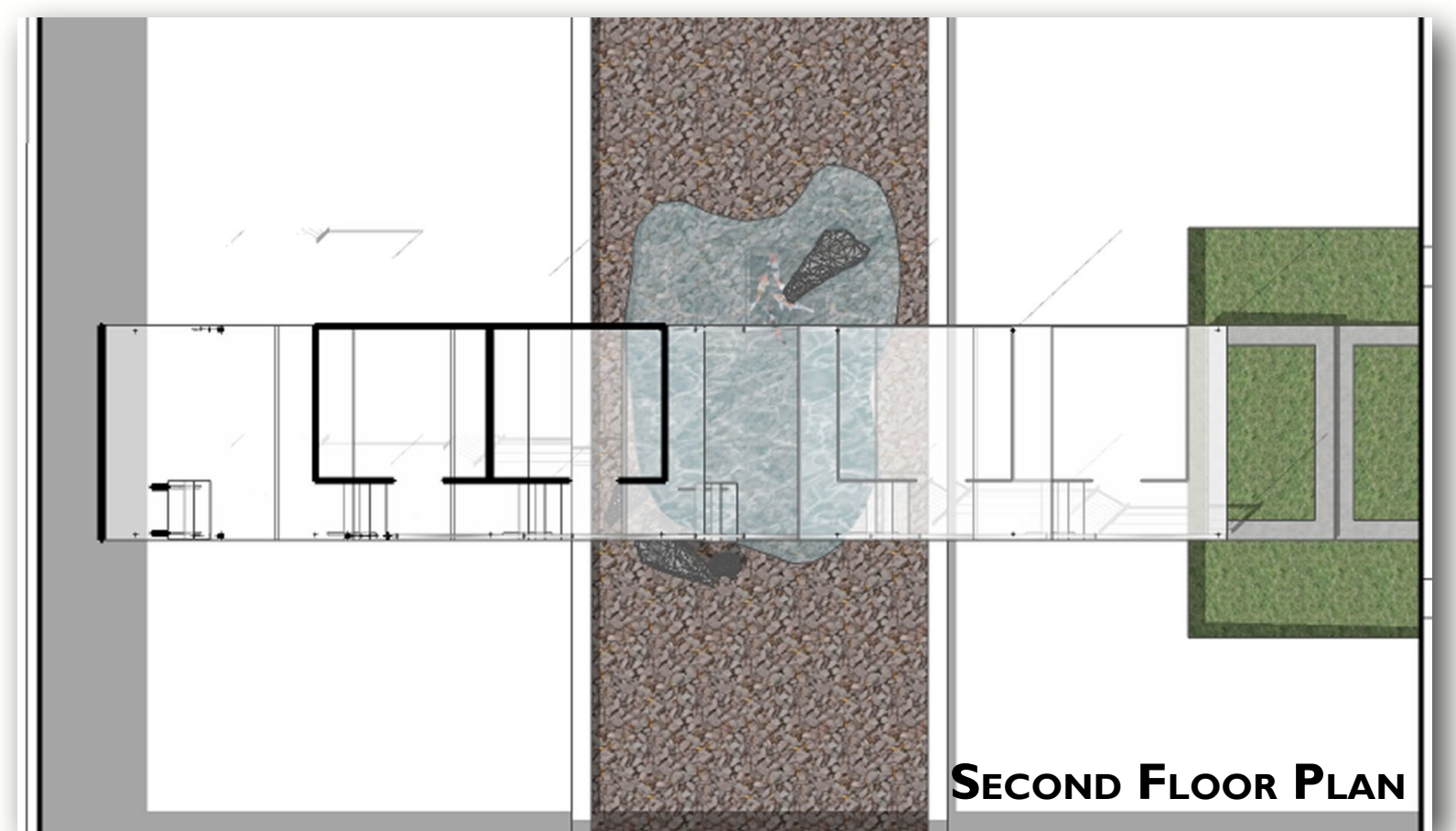
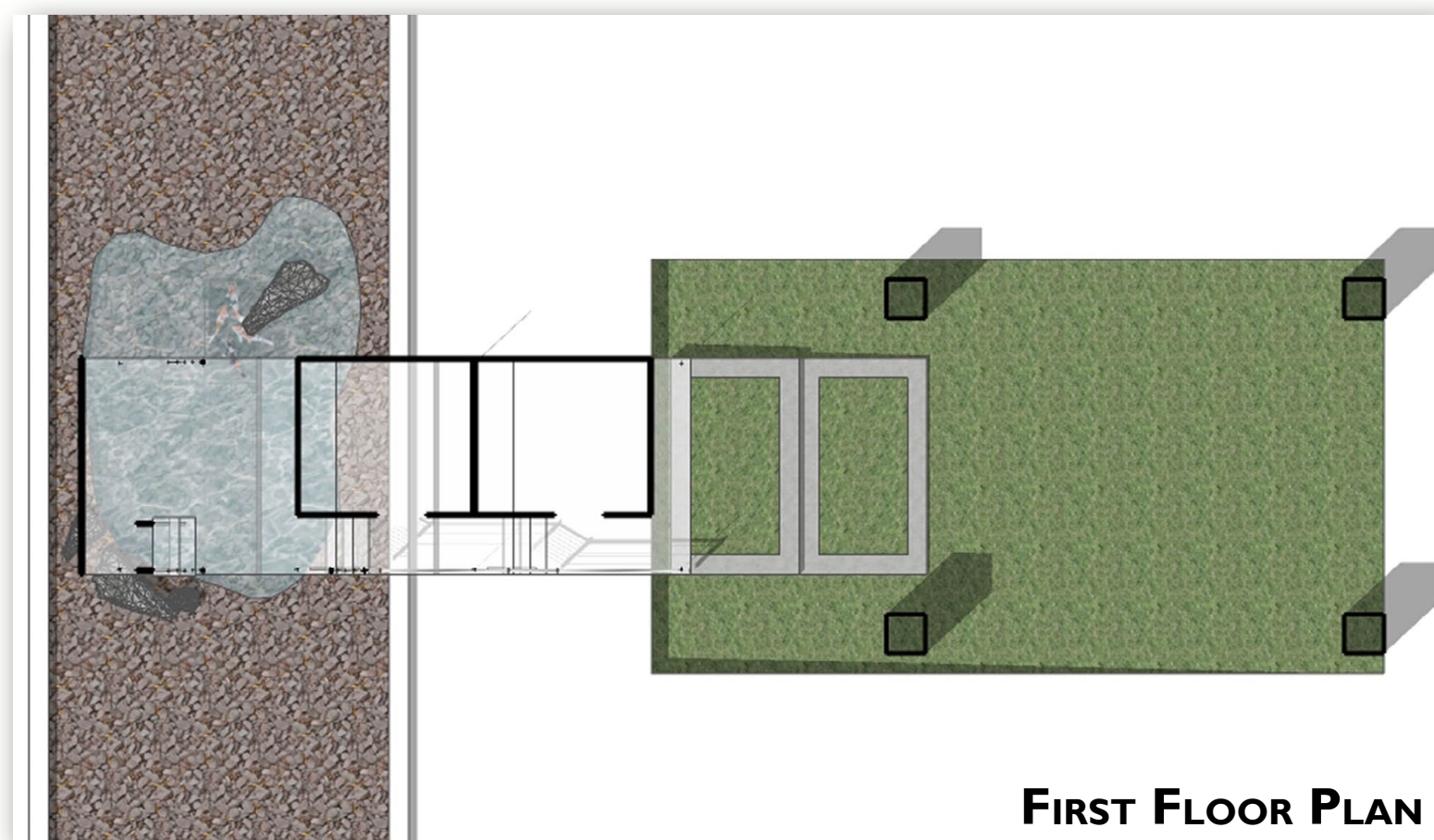
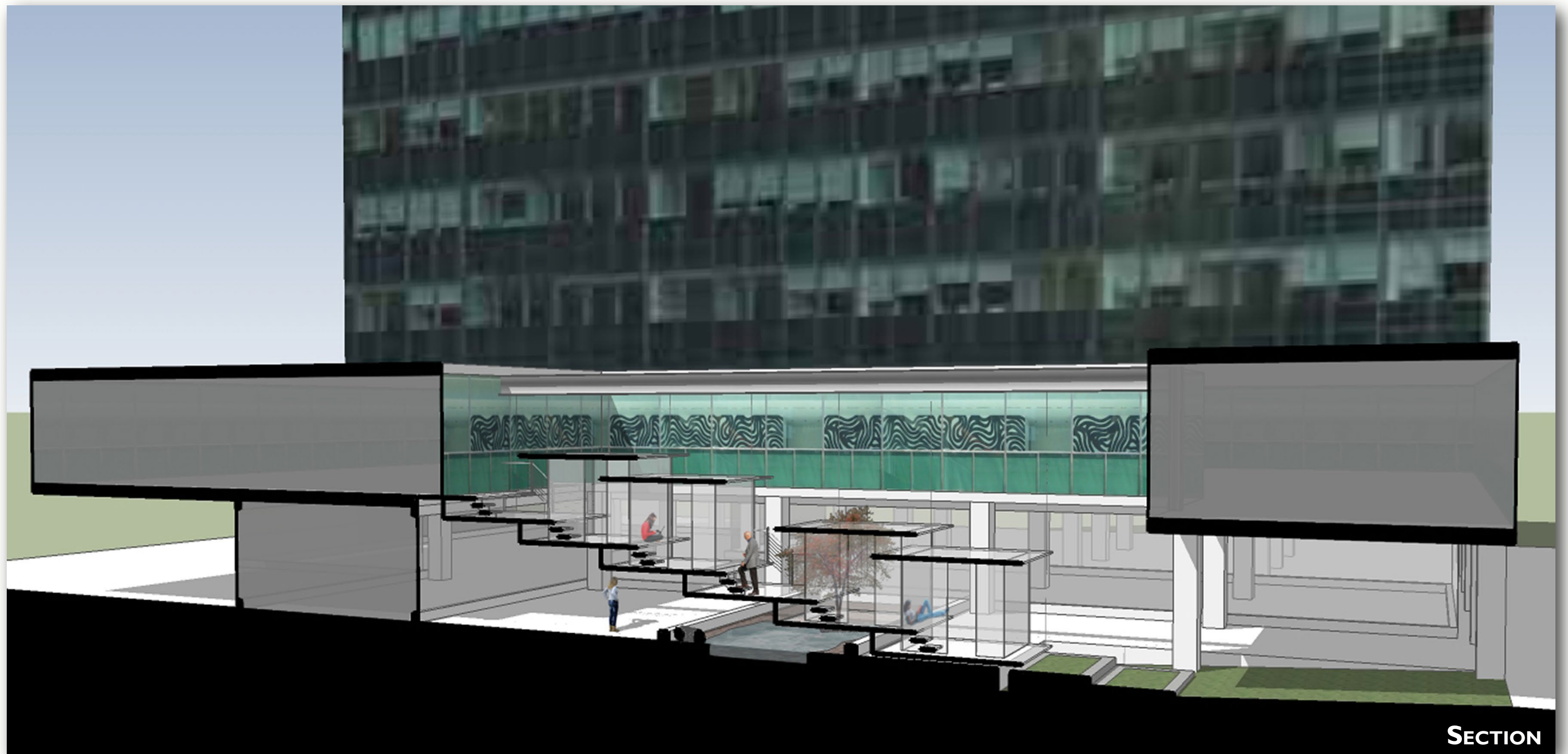


**SCALE MODEL**

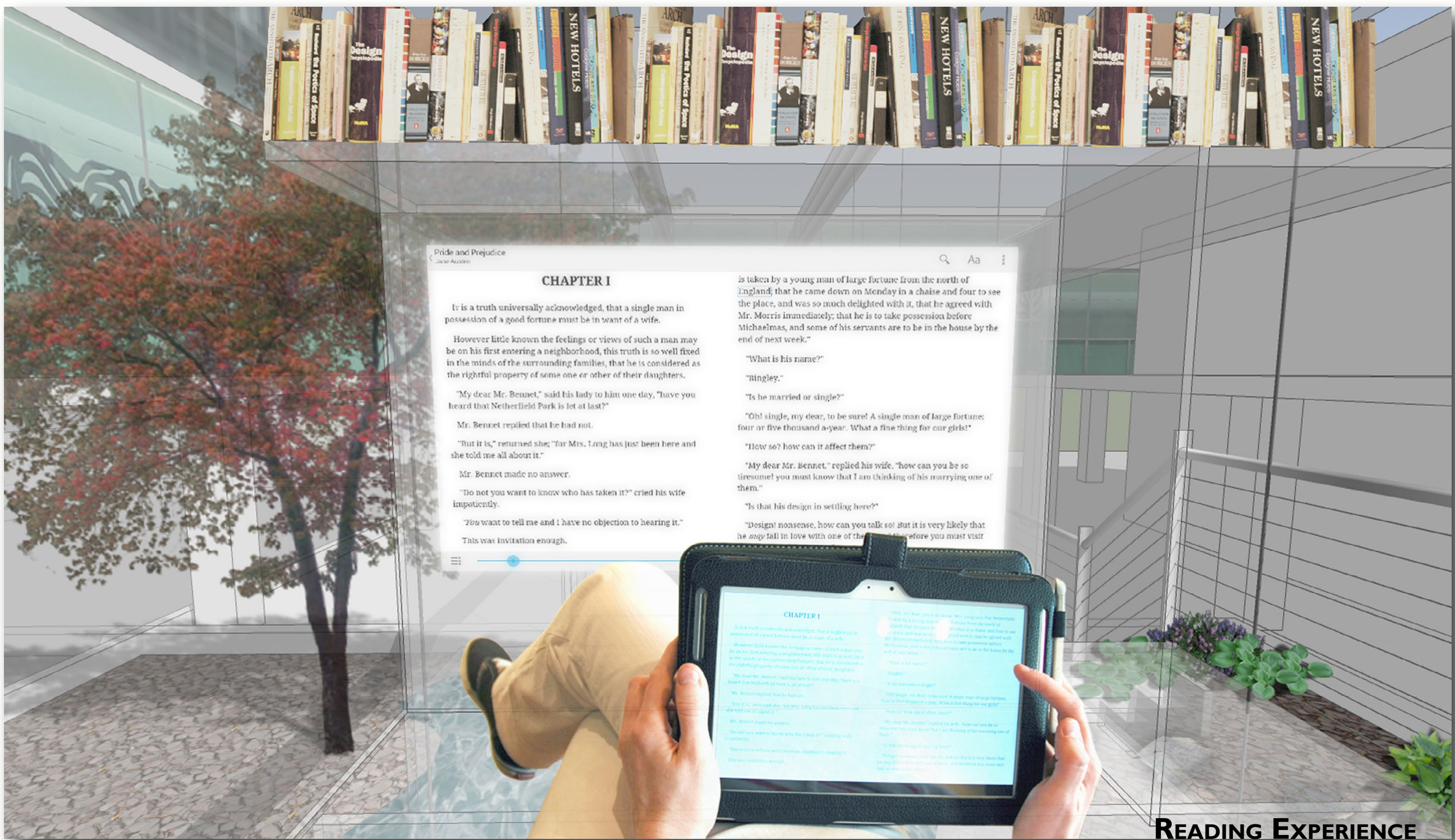
**& ART CONCEPT**

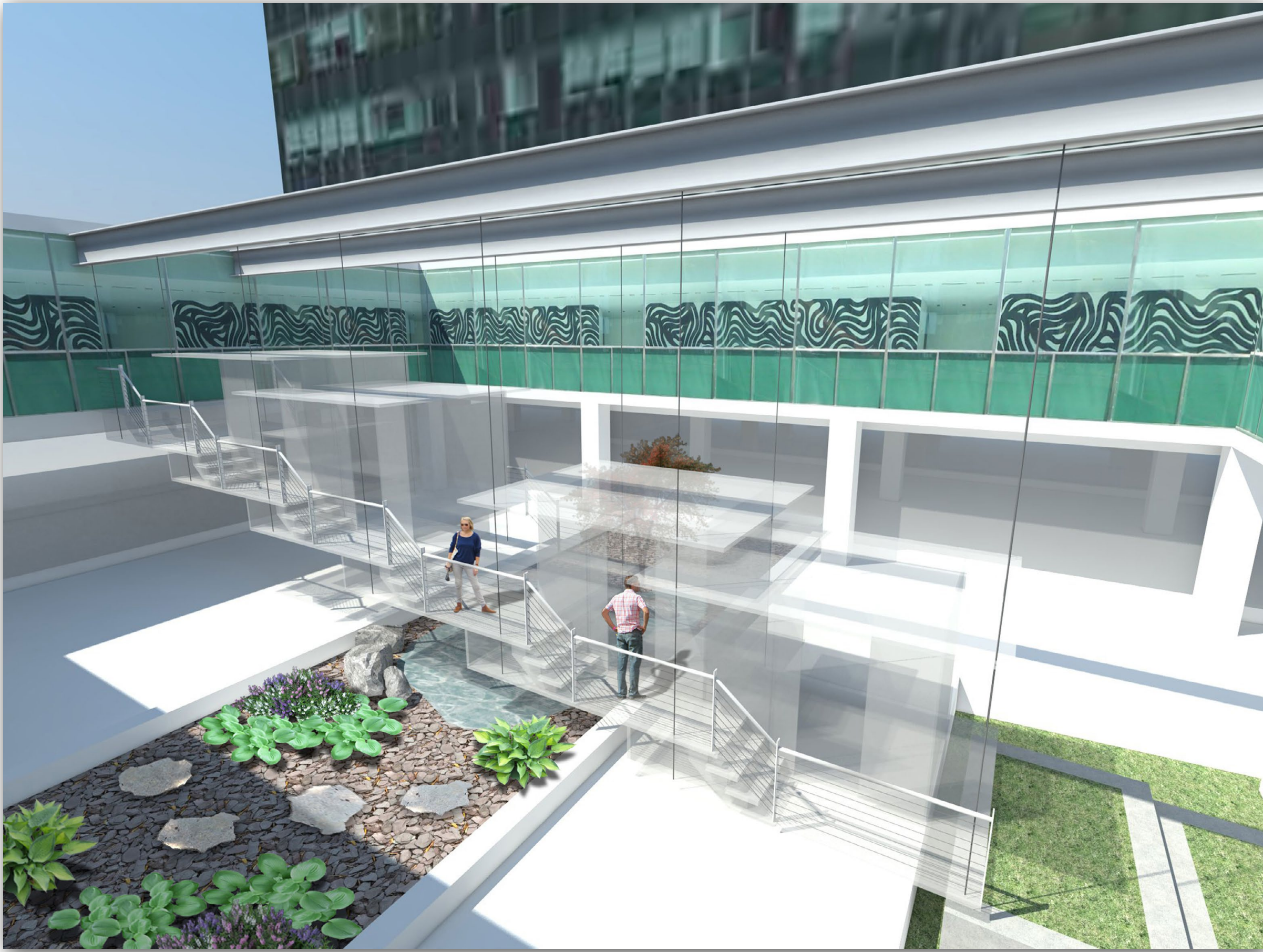
**DERIVED FROM A LIGHT STUDY  
UTILIZING THE SCALE MODEL**



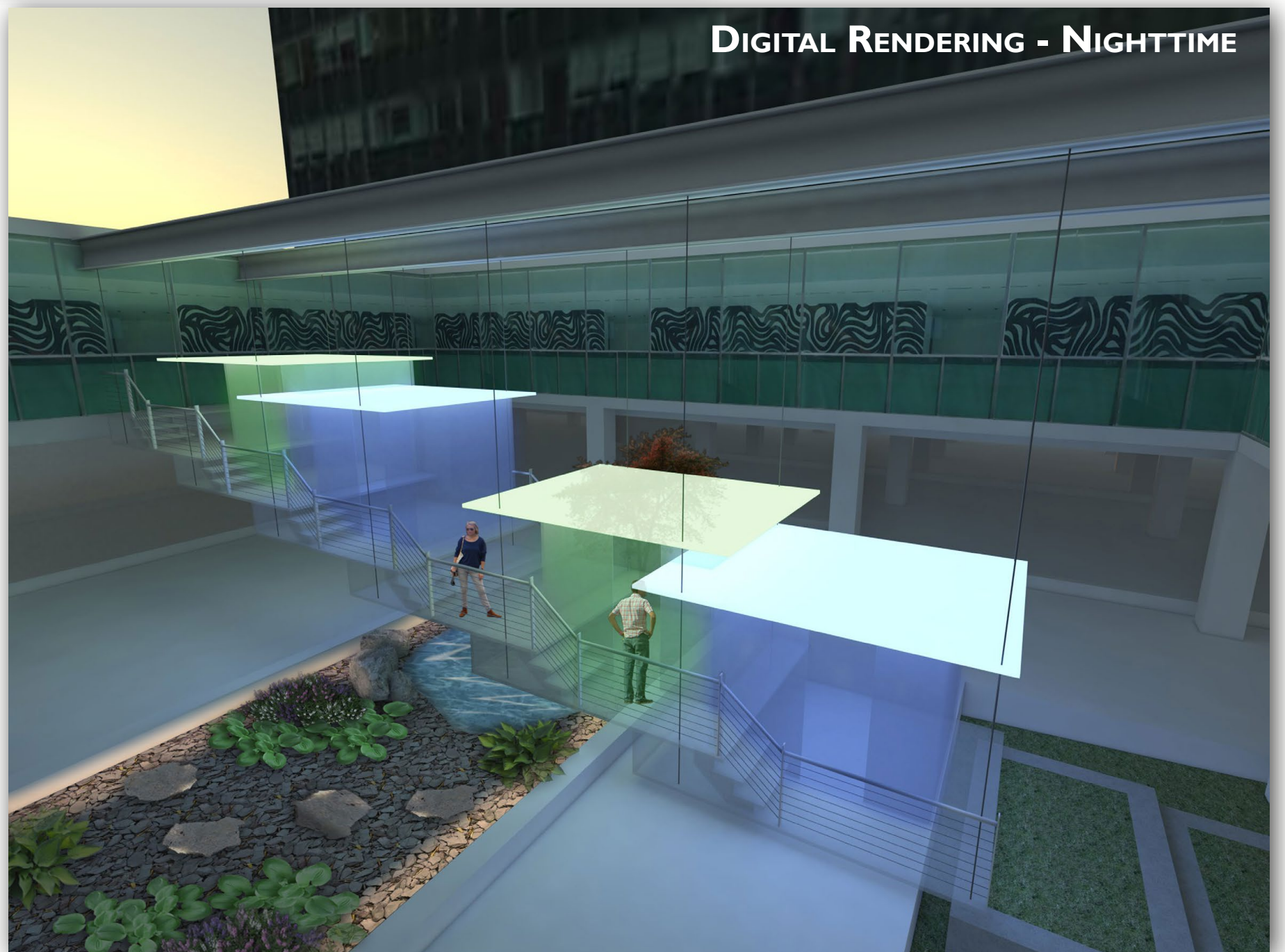




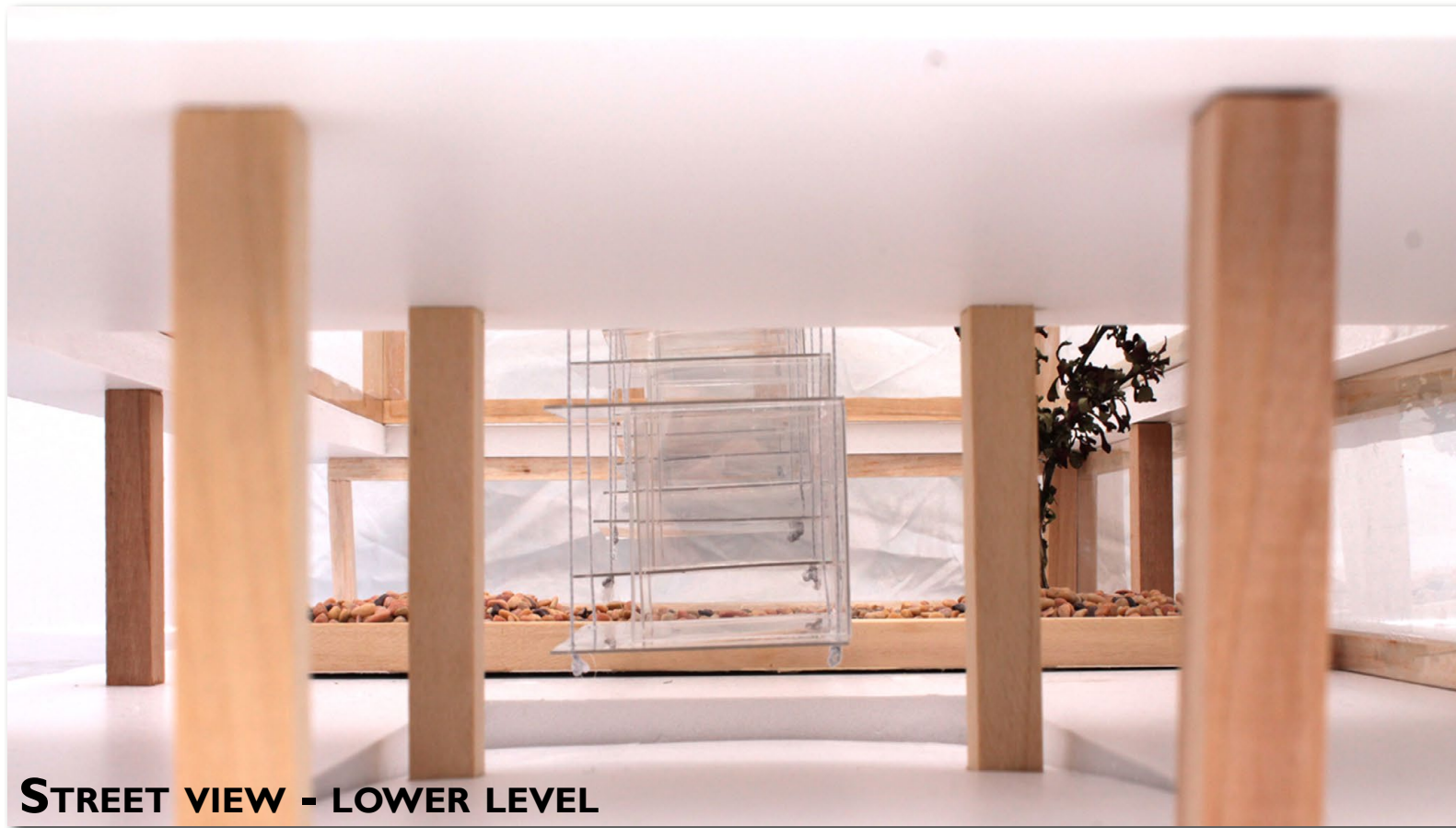




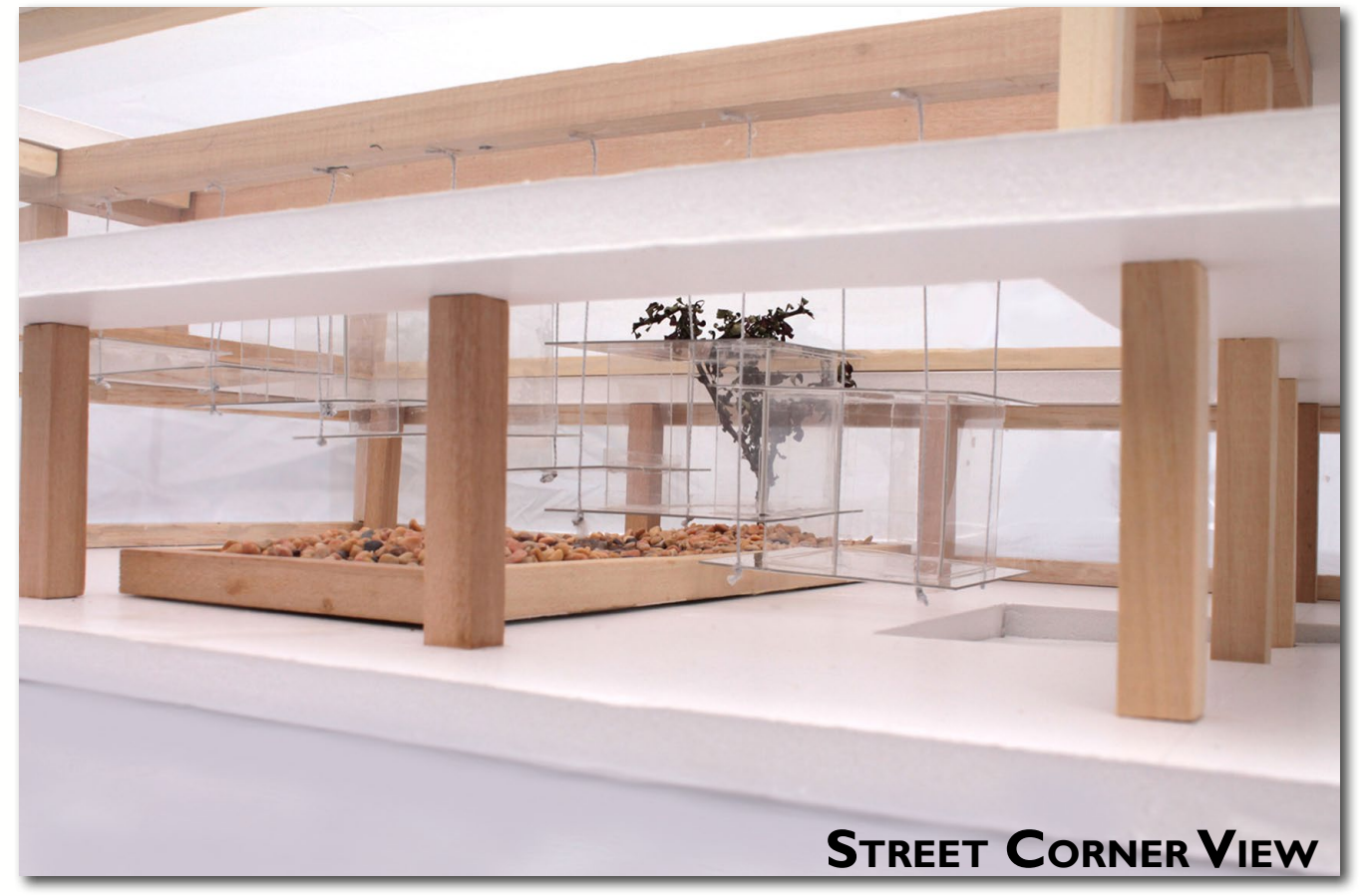
**DIGITAL RENDERING - DAYTIME**



**DIGITAL RENDERING - NIGHTTIME**



**STREET VIEW - LOWER LEVEL**



**STREET CORNER VIEW**

## Physical Models



**Original Concept Scale Model**



**Side View - 2 Floors**



**Full Model - Top View**