

GROPIUS HOUSE

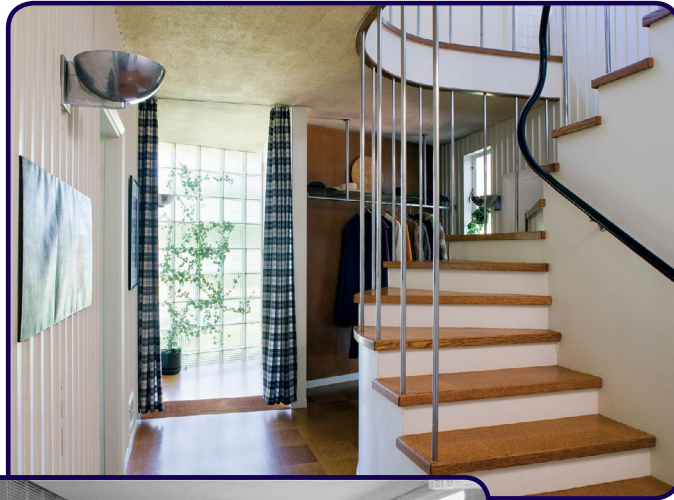
REDESIGNING AN ICONIC RESIDENCE

LINDA S KRUK

RESIDENTIAL INTERIOR DESIGN
PARSONS SCHOOL OF DESIGN

GROPIUS HOUSE - RENEWING A CLASSIC

WWGD? (WHAT WOULD GROPIUS DO (NOW)?)



Form follows function

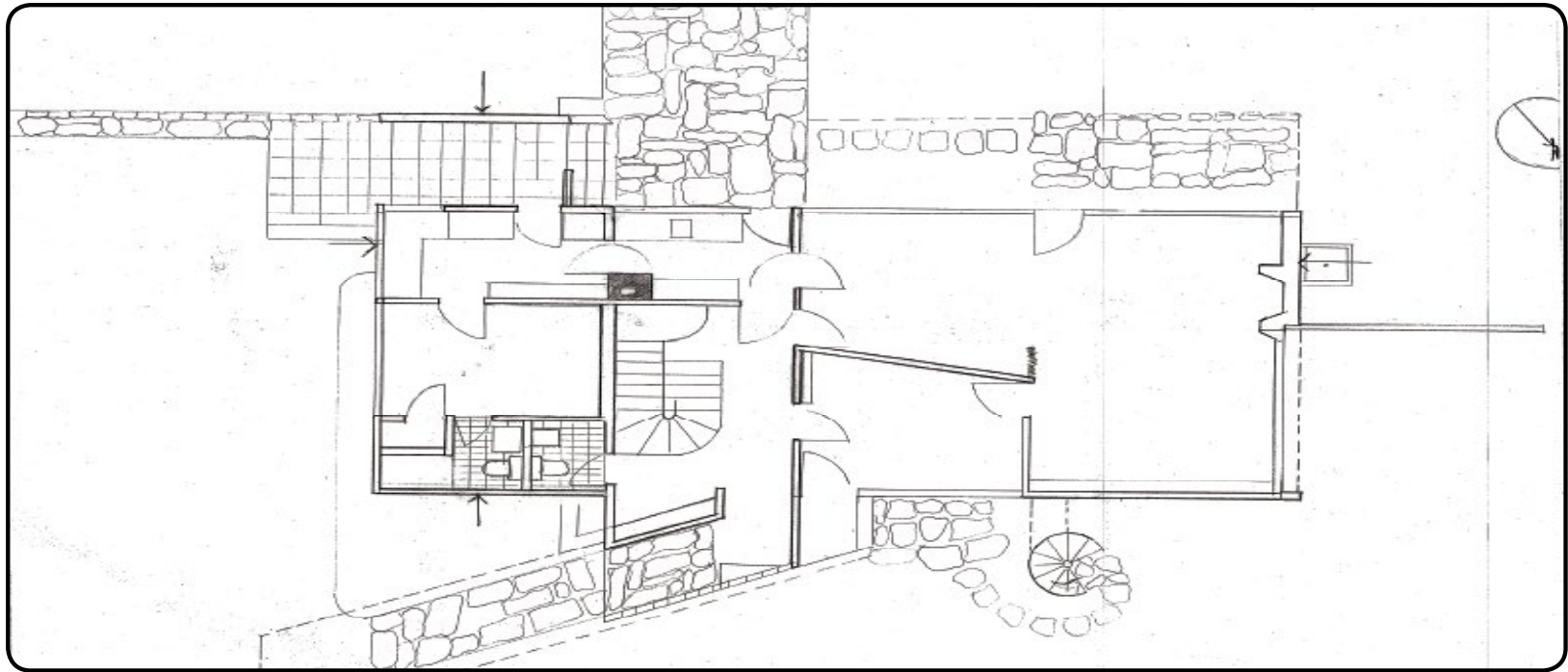
This is the basic Bauhaus tenet. The Gropius House, iconic in its simplicity and use of industrial elements, was designed by Walter Gropius in 1938 for himself, his wife and his daughter. It contains 2300 square feet of functionality and sophistication, yet quite unpretentious in its character.

A modern family of 5 has decided to call Gropius House "home" - and meeting the challenge to retain its history while employing the traditions of the Bauhaus using today's newest materials will be the way to Gropius House new future. It prompts one to wonder, with the evolution of building materials over the last 75 years - *What Would Gropius Do* to make this space a home to a new generation?

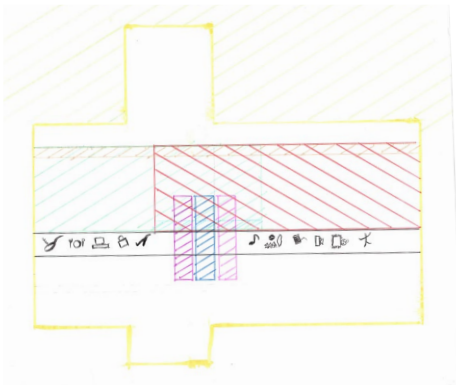
Simplicity - Angularity - Unity - Subtlety - Monochromaticity - Usonian

"THE MIND IS LIKE AN UMBRELLA - IT FUNCTIONS BEST WHEN OPEN." - WALTER GROPIUS

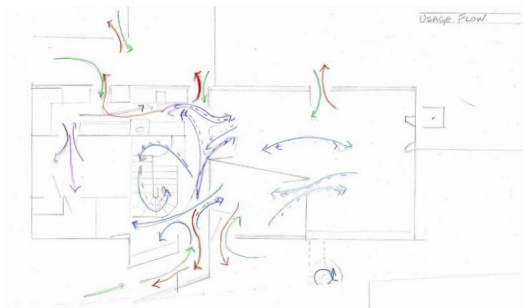
G



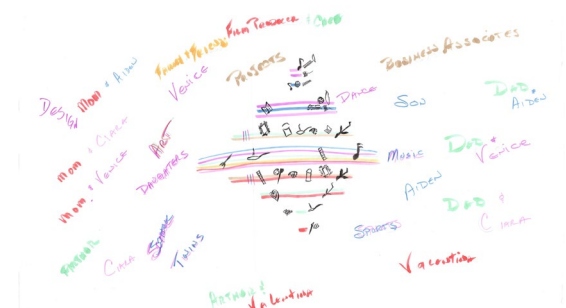
GROPIUS FIRST FLOOR - ORIGINAL FLOOR PLAN



ANALYSIS SKETCH - ACTIVITY BASED



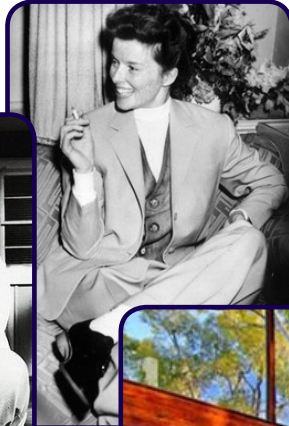
ANALYSIS SKETCH - FOOT TRAFFIC BASED



ANALYSIS SKETCH - FAMILY MEMBER BASED

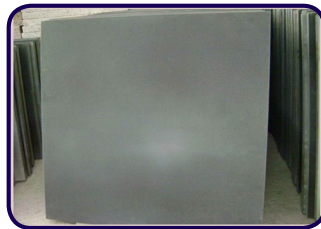
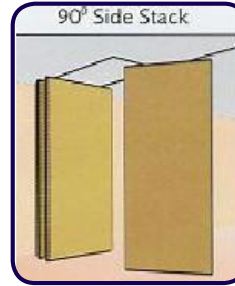
G

THE MOOD AND INSPIRATIONS FOR THE REDESIGN

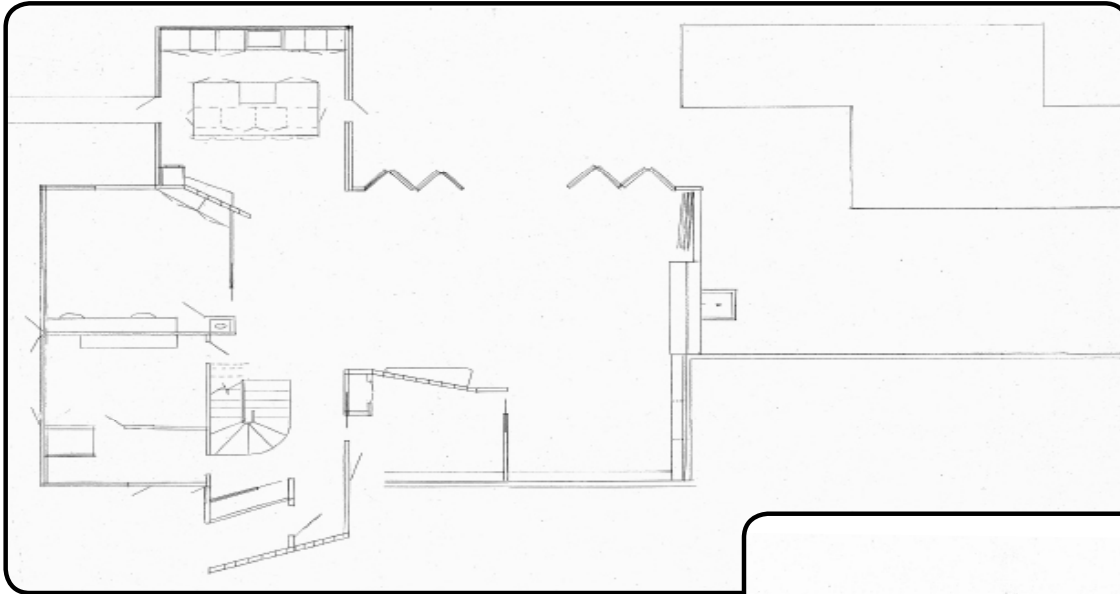


G

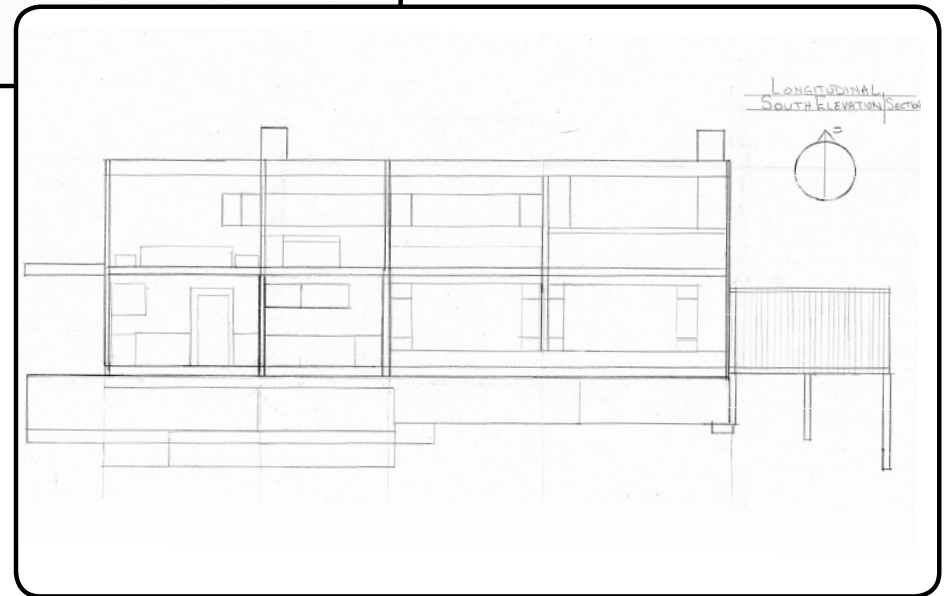
ELEMENTS AND ACCENTS - SUGGESTED USES IN REDESIGN



G

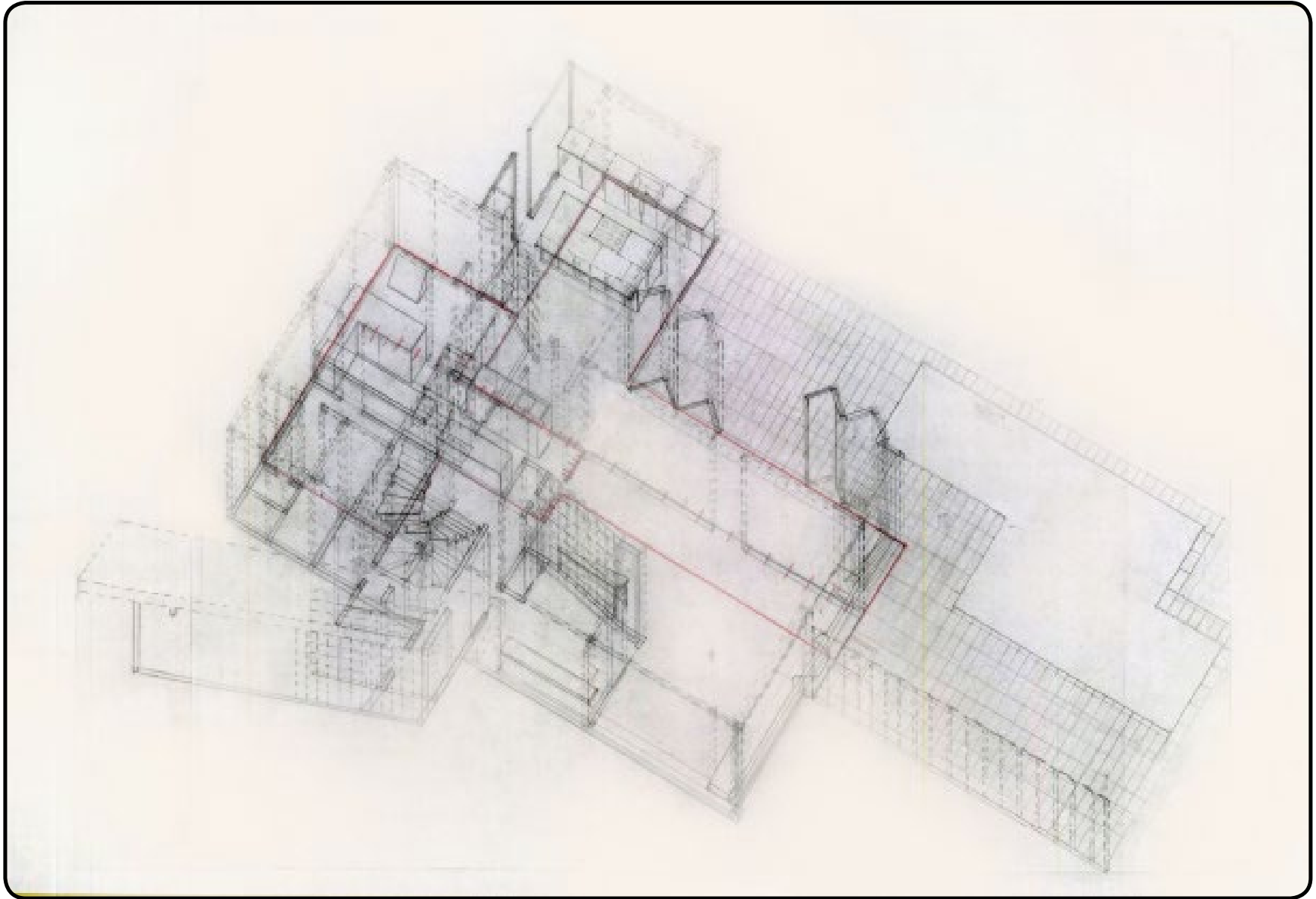


GROPIUS FIRST FLOOR PROPOSED LAYOUT



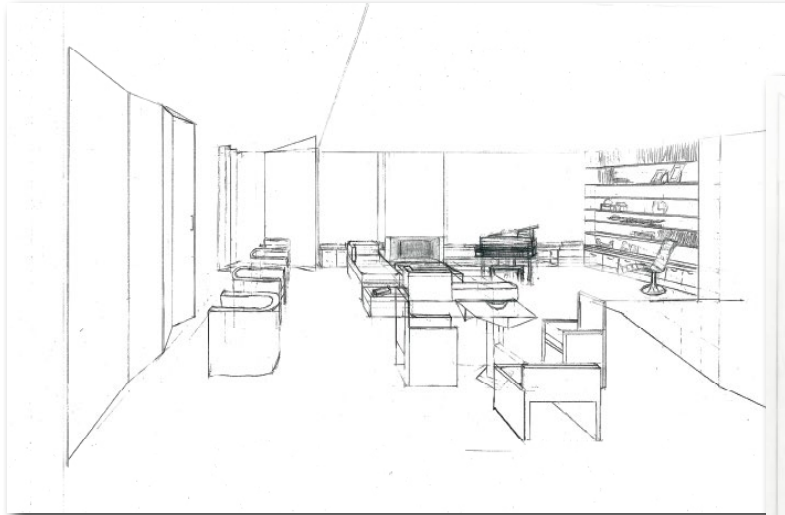
GROPIUS SOUTH ELEVATION-SECTION

G



GROPIUS FLOOR PLAN BEFORE & AFTER - OVERLAY DRAFTS

G



GROPIUS LIVING ROOM CONCEPT PERSPECTIVE - PENCIL

ROOM REDESIGN MYLAR OVERLAY WITH GRAPHICS ADDED



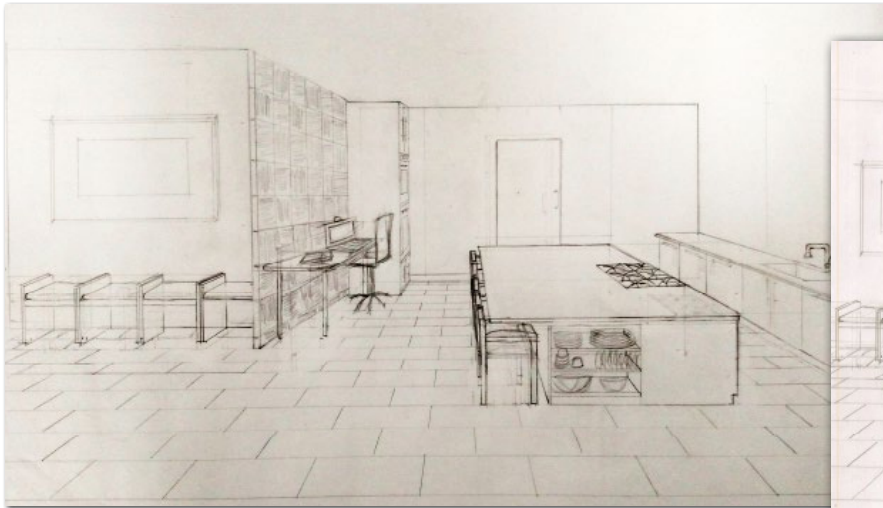
NEW LIVING ROOM:

- EMPLOY MOVABLE WALLS
- FLEXIBLE SEATING FOR MAXIMUM USABILITY
- PIANO FOR CHILDREN'S LESSONS
- GAME TABLE TO KEEP THE ROOM FAMILY-CENTRIC



ROOM REDESIGN WITH 4 LAYERS - TOP 2 LAYERS ARE MYLAR PENCIL DRAWING AND GLASS WALL OVERLAYS

G



KITCHEN BASE LAYER - PENCIL CONCEPT PERSPECTIVE

PENCIL DRAWING OVERLAID WITH GRAPHICS ON MYLAR



3 LAYER - KITCHEN WITH MYLAR OVERLAY PENCIL DRAWING

THE NEW KITCHEN:

- AN OUTSIDE-IN EXPERIENCE
- GARDEN ACCESS FOR FRESH VEGETABLES AND HERBS
- NO UPPER CUPBOARDS TO OBSTRUCT VIEWS
- OFFICE SPACE FOR CHEF DAD
- SLEEK DESIGN FOR ENTERTAINING OR FILMING TV COOKING EPISODES